

Scarboro Landfill Permit Violations

Harford County, MD June 7, 2008

Harford County Waste Disposal Center is still blatantly violating its operating permit with Maryland Department of the Environment.

- It continues to pollute air, groundwater and Deer Creek, a source of drinking water for thousands and tributary of the Susquehanna River and Chesapeake Bay.
- With residents living as close as 200 feet to the 450 ft high 40-plus acres of open trash and leaking liner breaks it poses dangerous health hazards to thousands.
- The MDE **permit requires 6 inches of daily cover** over impacted trash and 12 inches of intermediate cover. **No areas whatsoever are or were impacted or covered for the past 15 years.** Instead, small amounts of dirt mixed in occasional areas are smeared around with the open trash.
- MDE continues to back its granting of the dump's permit to triple in size. A new cell is being built and already has trash spread around it even though it has no liner yet.
- These photos show the condition of the dump in early evening after closing for the day June 2008.

Click photos for corresponding pages



Southeast slopes



Trash and ash



Facing east



Homeowner's dropoff area



Open leachate, aka
garbage juice

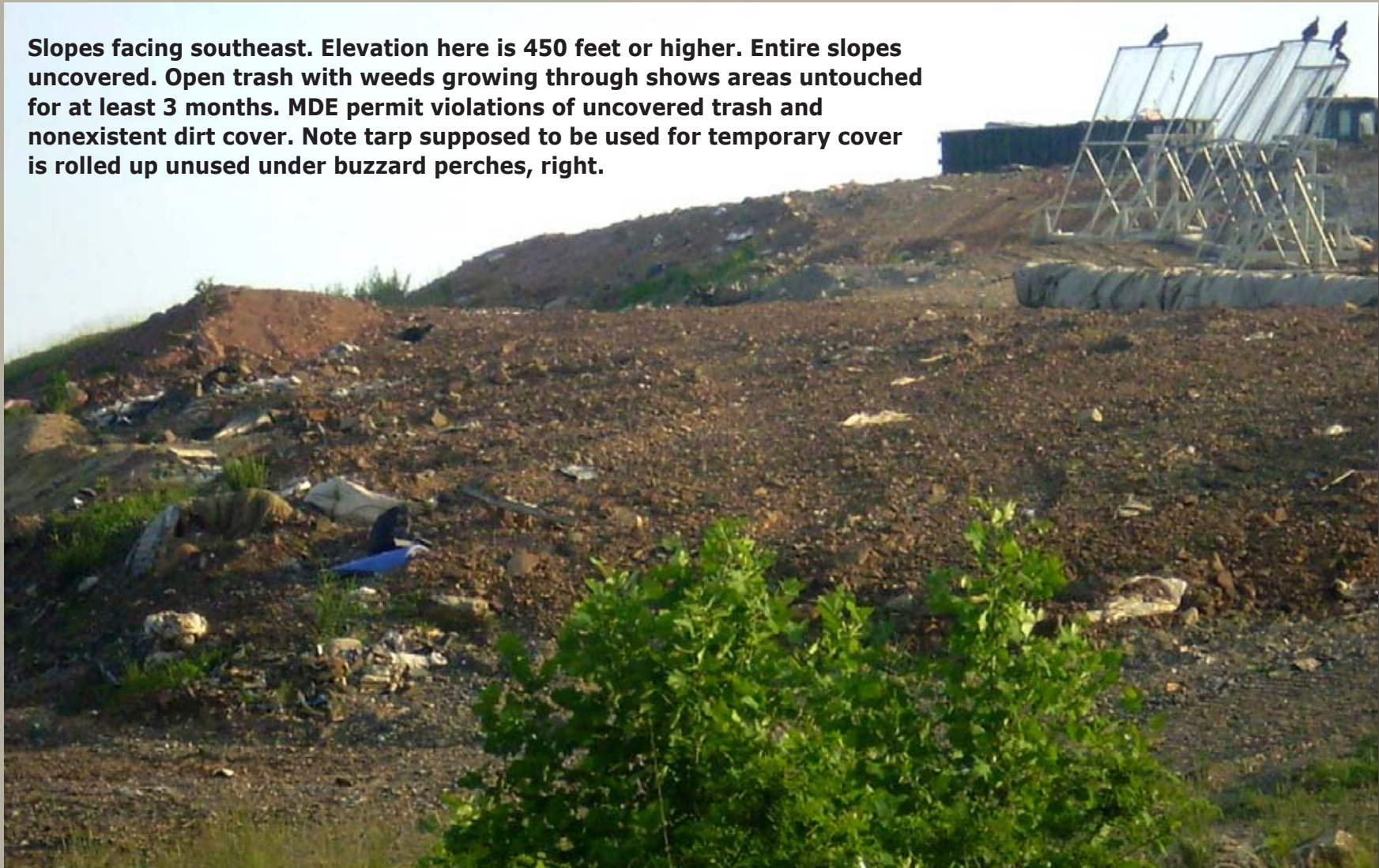


White powdered chemical
waste

Scarboro Landfill Permit Violations

Harford County, MD June 7, 2008

Slopes facing southeast. Elevation here is 450 feet or higher. Entire slopes uncovered. Open trash with weeds growing through shows areas untouched for at least 3 months. MDE permit violations of uncovered trash and nonexistent dirt cover. Note tarp supposed to be used for temporary cover is rolled up unused under buzzard perches, right.



Scarboro Landfill Permit Violations

Harford County, MD June 7, 2008



View facing northeast shows no attempt to cover trash at any time as shown by weeds growing through. MDE permit violation open uncovered trash. Evidence of attempted seeding thrown directly over trash. Trash is supposed to have 6 inches of dirt cover at the end of every day and 1 foot intermediate cover after a few weeks.

Scarboro Landfill Permit Violations

Harford County, MD June 7, 2008

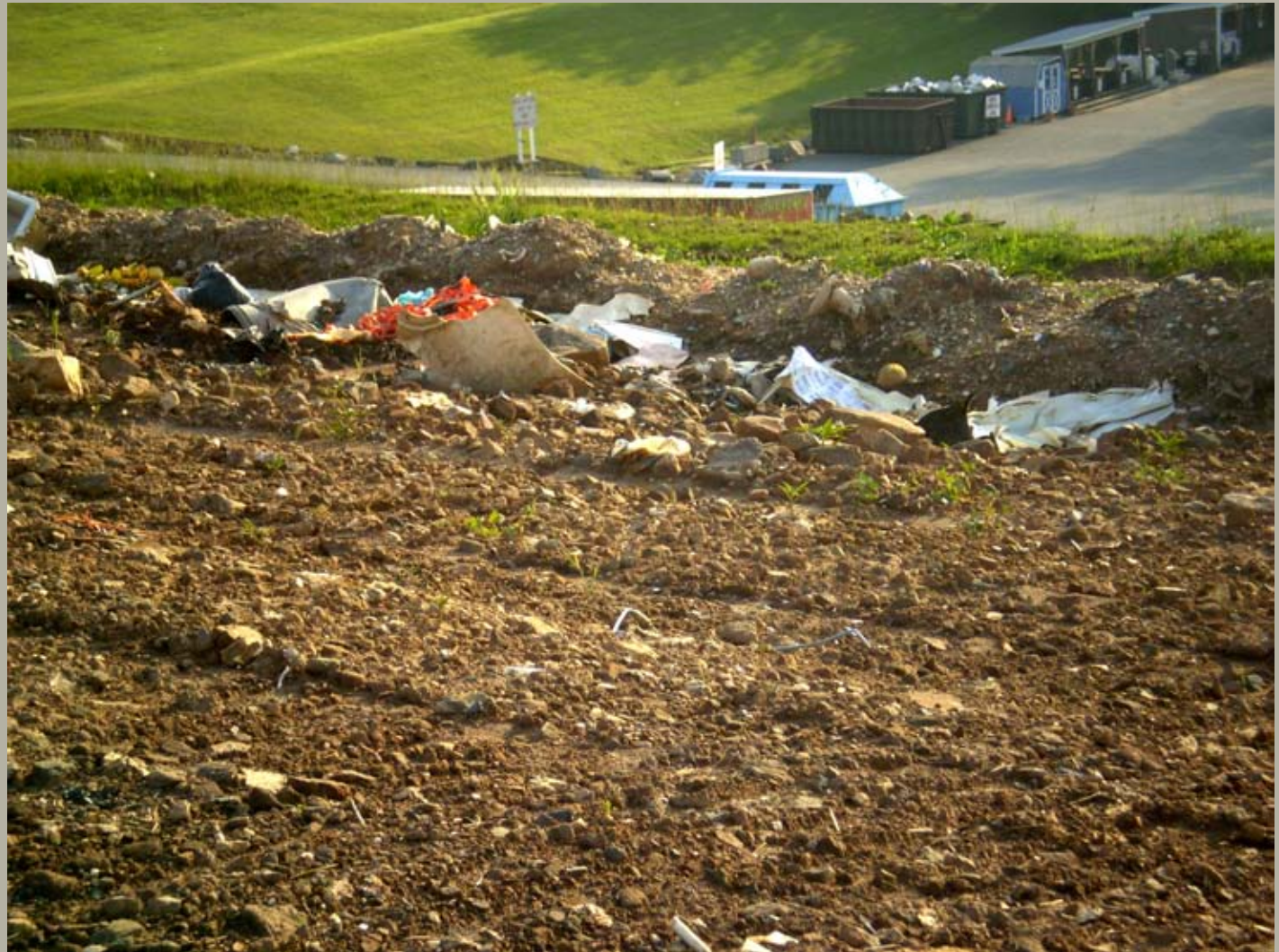


View facing northwest shows minimal dirt smeared into trash. Items in dirt are not rocks--all is trash. MDE permit violation open uncovered trash.

Scarboro Landfill Permit Violations

Harford County, MD June 7, 2008

View facing northwest shows ridge trying to cover up view of open garbage from parking lot and Scarboro Rd. MDE permit violation open uncovered trash. Minimal dirt smeared into trash. Items in dirt are not rocks--all is trash.



Scarboro Landfill Permit Violations

Harford County, MD June 7, 2008

Facing east at top of cell shows new trash dumped over old trash with no attempt to cover or add dirt. Trash includes food, liquids, insecticides with large amounts of maggots and bugs. Foul odor burns membranes. These views are each of different sections over approximately 42 acres at elevation above 450 ft.



Note weeds growing from trash indicates it's been untouched for many months or years.

Scarboro Landfill Permit Violations

Harford County, MD June 7, 2008

MDE operating permit states leachate (aka garbage juice) is to be drained through a system and removed.

There should be no ponding of leachate on the dump property. Ponding indicates breaks in the liner and poor construction.

The toxic water flows directly into Sulphur Run and Deer Creek, which is a tributary of the Susquehanna River.

It also enters groundwater **polluting wells of residents**. All residents within 12 miles use wells and are not served by municipal water.

These photos show leachate ponding excessively.



Buzzard (aka vectors, also a MDE permit violation) drink from leachate pond. Thousands of buzzards spread miles around the area to residential homes and farms, often attacking pets and cattle and leaving large amounts of droppings.

Scarboro Landfill Permit Violations

Harford County, MD June 7, 2008

These photos show closeup views of open trash, as seen in the distance photos. Trash and ash (black) dumped from county incinerator mixed together. Also shown is unused tarp, rolled up. Open trash is supposed to be covered with tarp at the end of every day if it cannot be covered with the required 6 inches of dirt. No attempt at temporary cover.



Unused rolled up tarp sits out amidst open trash.

Scarboro Landfill Permit Violations

Harford County, MD June 7, 2008

Bulldozers are not operating, the dump is closed. Residents are pointed by sign to dump their own loads. **Anyone can drive there and dump anything, as long as they pay their fees--cash only.**

What exactly do these bulldozers do all day since they don't ever cover the trash with the required daily cover of dirt or even bother to push the trash anywhere? **There is no training of any workers at the dump,** yet another MDE permit violation.

Harford County increased salaries of all county workers in June by 9%. The county tried for an additional increase on top of that for dump workers, and tried to pass a 20% increase in fees to private haulers and residents. Residents must pay private haulers as there is no municipal trash pickup in the county. Fees are expected to increase in 2009. The fees are not used to operate the dump.



Scarboro Landfill Permit Violations

Harford County, MD June 7, 2008

A huge mound of chemical waste from JM Huber of Havre de Grace, MD sits out to blow in the wind. The chemical is silica mixed in toothpaste. **It is a skin and mucous membrane irritant.** Truckloads have been dumped and left to sit out in all areas of the dump for years, as evidenced in the aerial photo taken in Sept 07.

Residents nearby have reported **unidentifiable and untreatable rashes in children** for two decades.

